



# **Telehealth - Using digital technology to improve everyday health**

Morag Hearty, Lanarkshire Telehealth Programme Manager

Euan Duguid, Communication Manager, South Lanarkshire H&SCP



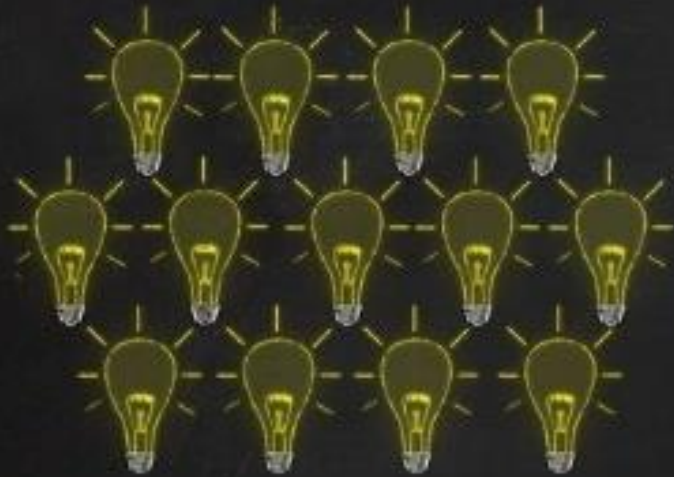


A vintage Sunitra T610 television set is shown from a front-facing perspective. The TV is housed in a dark wood-grain cabinet. The screen is a large, rounded rectangle, currently displaying the text "Improving people's lives" in a bold, black, sans-serif font. To the right of the screen, within the same cabinet, is a control panel. This panel includes a speaker grille at the top, followed by several horizontal sliders and buttons for channel and volume control. Below these are three small, square indicator lights. The model name "SUNITRA T610" is printed in small letters at the top of the control panel. The television is mounted on a simple wooden stand with a flat top and curved legs. The background consists of a wall with a plaid pattern and a window on the right side showing some greenery outside.

**Improving  
people's  
lives**



# Strategic drivers



**National strategy**



**Local ambitions and plans**



**Digital growth**

# Technology Enabled Care programme

**Assistive  
technology**

**Video  
platforms**

**Digital  
Platforms**

**Home and  
mobile health  
monitoring**

**Communication**

**Funding**





: Please download and embed film in this slide

<https://vimeo.com/198038609?lite=1>

# Unlocking myths

Percentage of premises in Scotland with superfast  
Broadband?

**89%**

Number of people with access to  
internet at home

**9/10**

Percentage of people owning a mobile phone

**90%**

Percentage of people owning a smart phone

**70%**



# VC in care homes

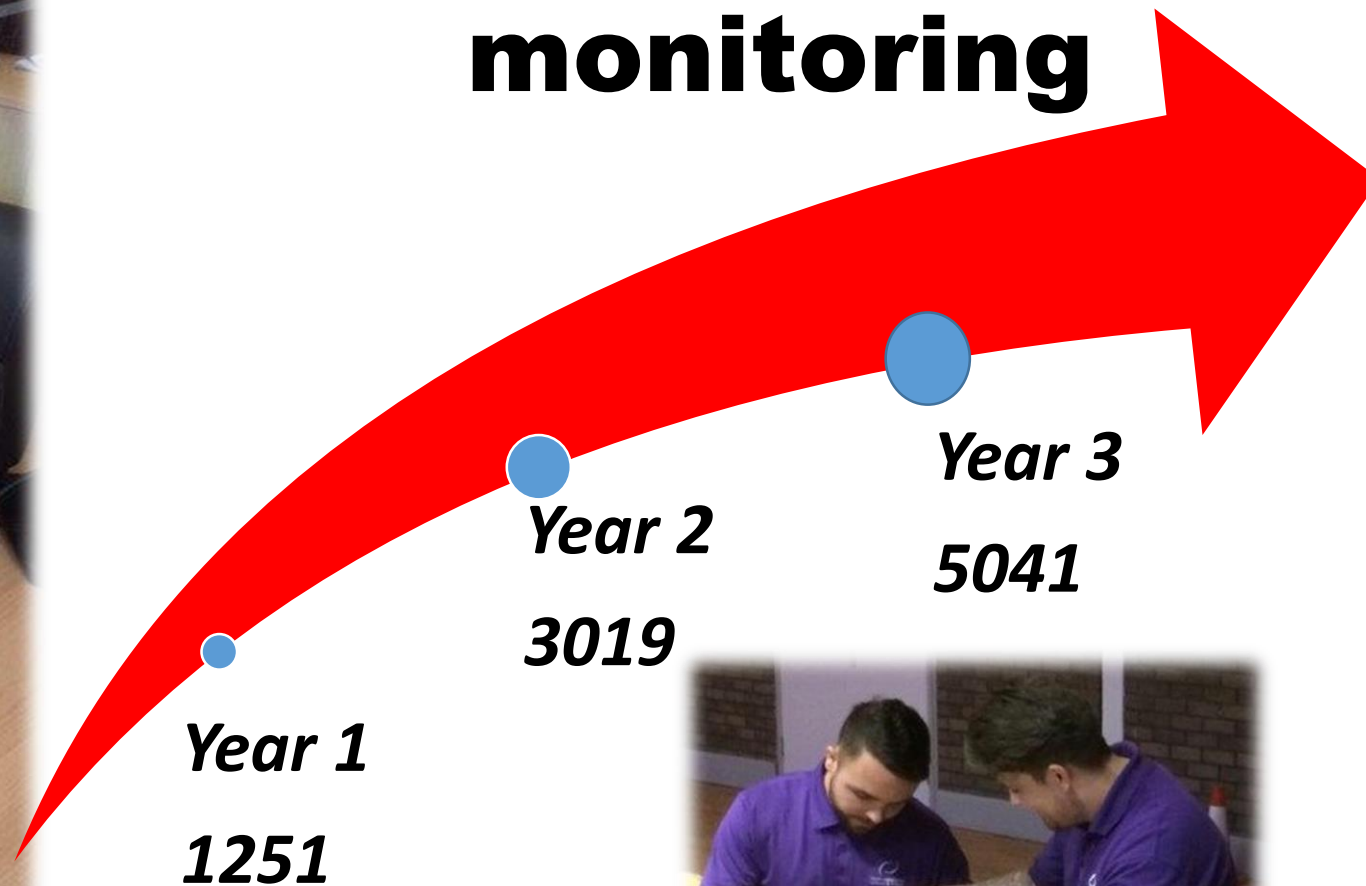




Film: **Please download and embed film in this slide**

- <https://vimeo.com/290461707/6747ffb2ba>

# Remote health monitoring



# Please download and embed film in this slide

- <https://vimeo.com/259839666>



# **Assistive Technology: providing a helping hand**

**GPS tracking**

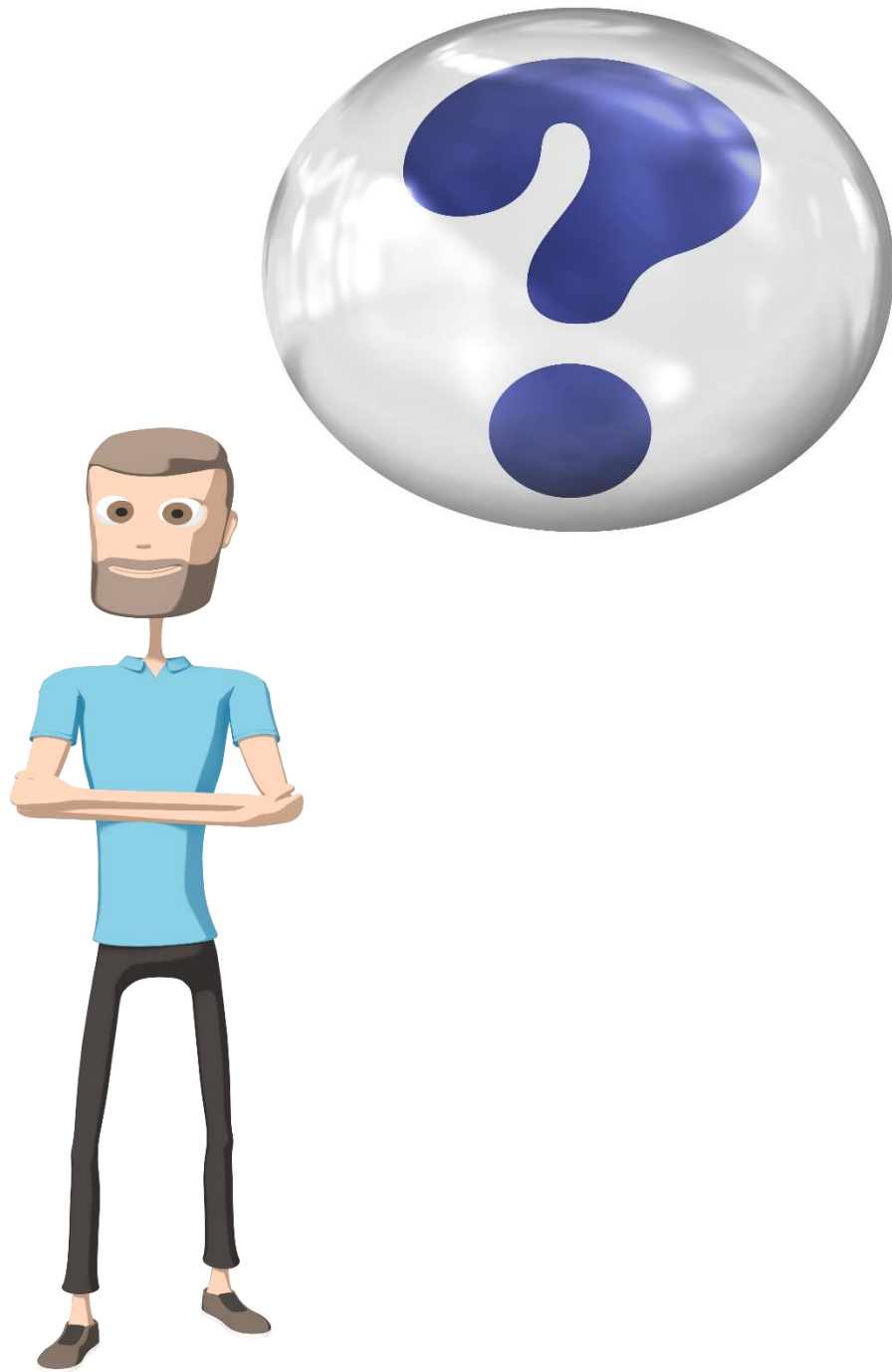
**Door entry  
systems**

**Motion sensors**

**Alexa, Fitbits etc.**

# From grassroots support to strategic buy in







# Get in touch

[morag.heartly@lanarkshire.scot.nhs.uk](mailto:morag.heartly@lanarkshire.scot.nhs.uk)

[ewan.duguid@lanarkshire.scot.nhs.uk](mailto:ewan.duguid@lanarkshire.scot.nhs.uk)

[www.slhscp.org.uk](http://www.slhscp.org.uk)